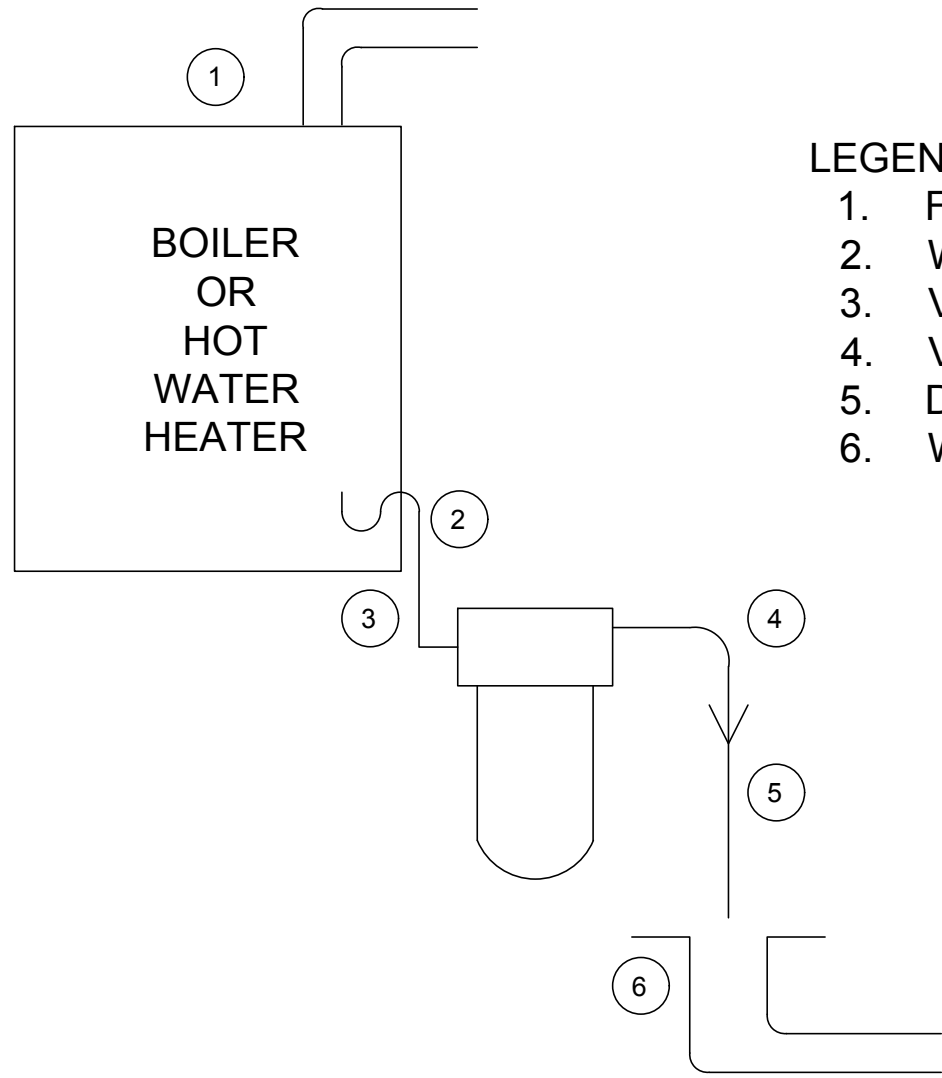


Wall Hung Heater/ V-200 Vertical ph Treatment Cansiter to Drain.



- LEGEND**
- 1. Flue Pipe
 - 2. Water Trap
 - 3. V-200 Inlet Port
 - 4. V-200 Outlet Port
 - 5. Drain Line
 - 6. Waste Drain

REV:	DESCRIPTION:	BY:	DATE:
AMENDMENTS:			

SITE: <div style="color: magenta; font-weight: bold; font-size: 1.2em;">CLEARWATER, LLC</div>	<div style="color: magenta; font-weight: bold; font-size: 1.2em;">Clearwater 1</div> <small>DRAWING NO.</small>	<div style="color: magenta; font-weight: bold; font-size: 1.2em;">----</div> <small>PROJECT NO.</small>	<div style="color: magenta; font-weight: bold; font-size: 1.2em;">06/02/16</div> <small>DATE.</small>	<div style="border: 1px solid black; width: 50px; height: 50px; margin: 0 auto;"></div>
TITLE: <div style="color: magenta; font-weight: bold; font-size: 1.2em;">Wall Hung Heater/V-200 Vert. Treat. Can.</div>	<div style="color: magenta; font-weight: bold; font-size: 1.2em;">NA</div> <small>SCALE AT A4.</small>	<div style="color: magenta; font-weight: bold; font-size: 1.2em;">SG</div> <small>DRAWN.</small>	<small>CHECKED.</small>	<small>REVISION.</small>